

Carù

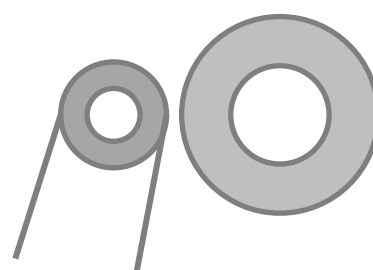


Since 1961

*PATTERN SUEDE FINISHING S330
FOR ALL KNITS & WOVEN
of
BOTH NATURAL and SYNTHETIC
FIBERS*



 **ITALY** 
For info: info@carusrl.it



The sueding machine S330 is made of one sueding roller which, contrasted to a roller covered with rubber, let's to suede fabric. The Pattern Sueding effect; In this case the roller covered with rubber has to be replaced with a roller engraved with designs (patterns) which has to be reproduced on fabrics.

Carù



The exposed features are indicative and could be changed at any time.

This machine can be used on synthetic leather, micro fiber, nonwoven, technical textil, wool and all knits fabrics;

The Pattern Sueding can be use for handling a wide range of product and also incorporates many design features, how you will use it up to your need of creavity in sueding.

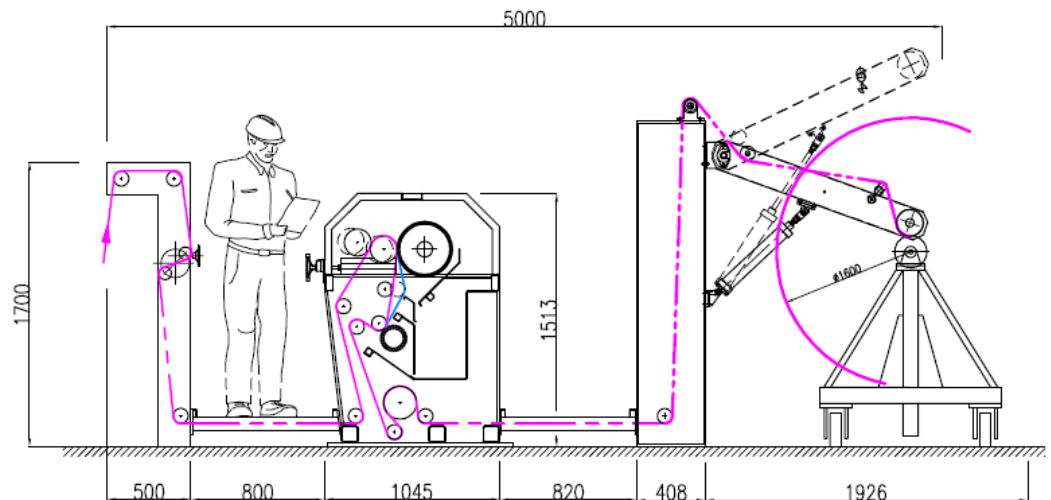


TABLE WIDTH	FROM 2000mm TO 2600mm
WORKING WIDTH	FROM 1800mm TO 2400mm
MACHINE SPEED	UP TO 30 mt/ min
INSTALLED POWER	FROM 23 TO 32 KW
MACHINE WEIGHT	5600KG

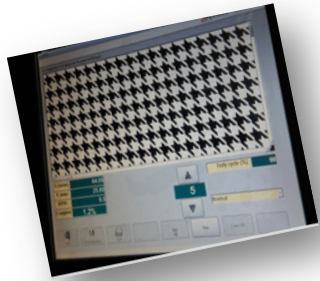
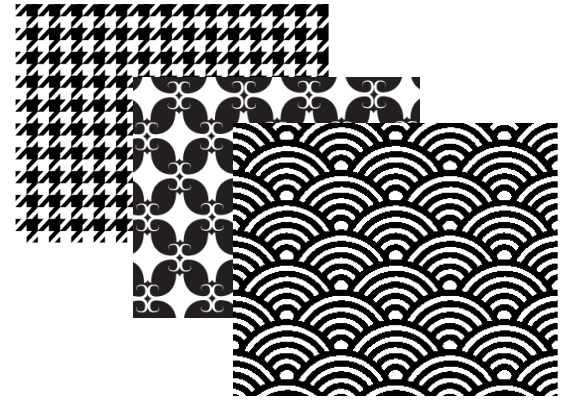




LSC100 LASER ENGRAVING MACHINE

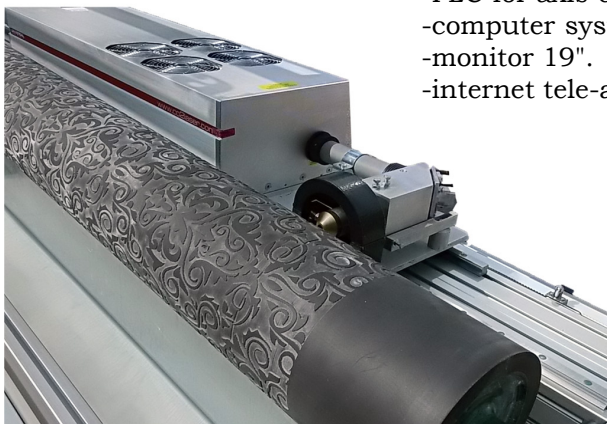
This machine has been design to engrave patterns on rubber rollers;

The laser engraving machine has two main parts: a laser source and a controller unit system. As a direct laser engraving machine, the LSC100 combines mechanical precision and stability with state-of-the-art technology and operation. Engraving is performed on elastomer material as synthetic rubber.



TECHNICAL FEATURES

- adjustable focus distance,
- automatic water cooler chiller,
- exhausting suction fan,
- PLC for axis control,
- computer system unit,
- monitor 19".
- internet tele-assistance.

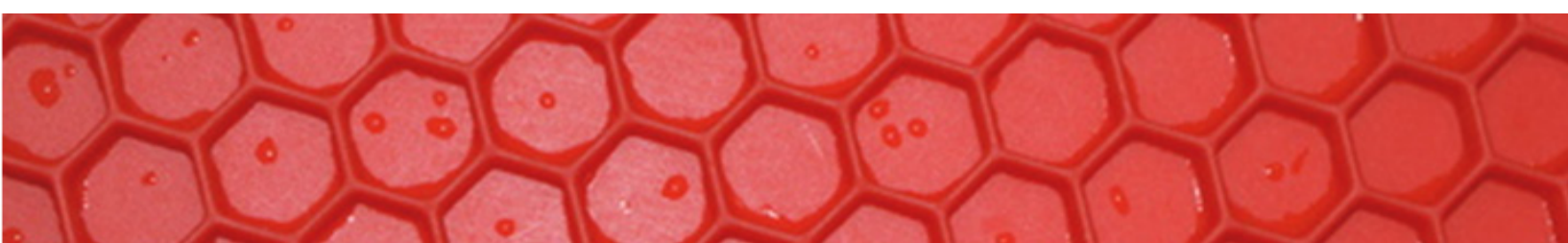


ROLLER WIDTH	2000—2600mm
WORKING WIDTH	1800-2400mm
MACHINE TOTAL WEIGHT	600Kg
INSTALLED POWER	3 Kw

The new LSC100 is simple to operate thanks to intuitive navigation and ergonomic user interface. The control program runs on a Windows operating system.

The exposed features are indicative and could be changed at any time.

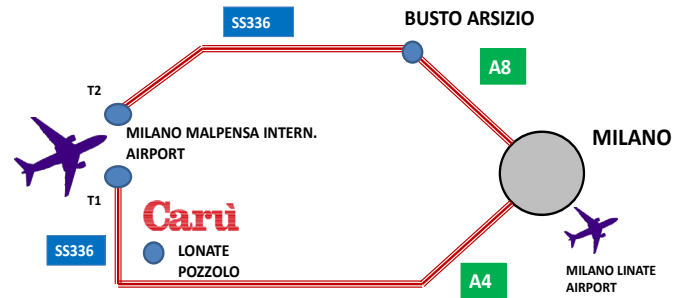
Class 4 Laser Product.



Carù

Production range:

- SUEDING MACHINES
- DUST CLEANING MACHINES
- CORDUROY MACHINES
- LASER ENGRAVING MACHINES
- SHEARING MACHINE
- RAISING MACHINES



Carù is located at 10 minutes from the International Airport of Milano Malpensa

Macchine Carù S.r.l.

Sede legale, Registered office: Via Magenta 43, 21052 Busto Arsizio (VA) ITALY

Sede operativa, Headquarters: Via Lario, 4 - 4A, 21015 Lonate Pozzolo (VA) ITALY

Tel: +39 0331-261485 - Email: info@carusrl.it



P.Iva 02897530123 - Cap. Soc. € 40.000,00 i.v. - N. REA: Varese 300424

The power of quality

MACCHINE CARU' S.r.l

Via Lario 4, Lonate Pozzolo 21015 (VA), Italy

Tel: +39 0331261485 Email: caru@carusrl.it - info@carusrl.it

<http://www.carusrl.it>



 **ITALY**
For info: info@carusrl.it